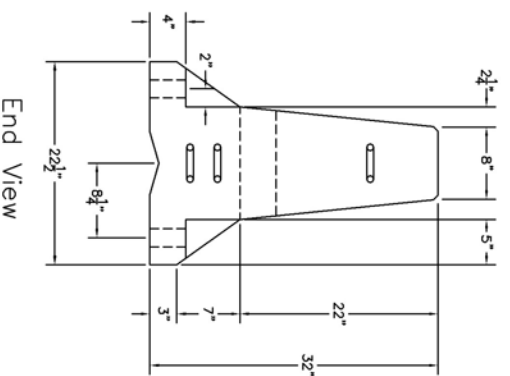
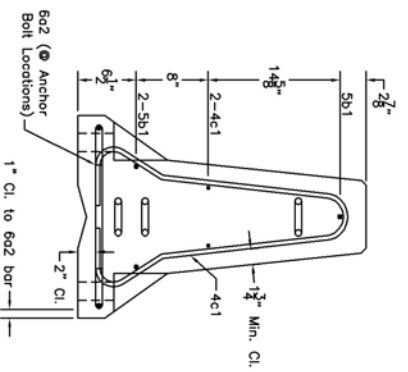


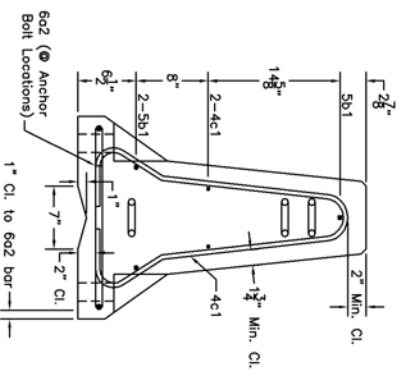
Figure A-2. Temporary Barrier Design Details (English)



End View



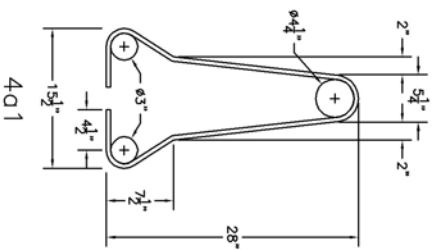
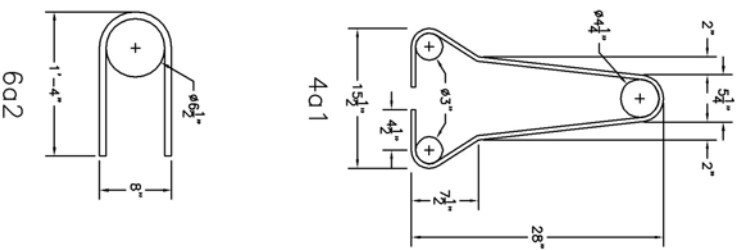
Section A-A (Typ.)



Section B-B (Typ.)


		NCHRP 22-14(2) Temporary Barrier with Quad-cab Pickup Profile and Tie Down Details	Sheet
			3 of 5
Mowbray Roadside Safety Facility	Drawing Name 2214TB-2 R2.dwg	Scale 1=16	Date
			10/17/2005
			Rev
			CEP
			Rev
			KAP

Figure A-3. Temporary Barrier Profile Details (English)



BILL OF BARS

Mark	Bar No.	No.	Length	Material	Pin Dia.
4a1	4	12	6'-0"	A615 Gr. 60	3" & 4 1/4"
6a2	6	6	2'-11"	A615 Gr. 60	6 1/2"
5b1	5	3	12'-2"	A615 Gr. 60	
4c1	4	2	12'-2"	A615 Gr. 60	
6d1	6	2	8'-5"	A706 Gr. 60	
6d2	6	2	7'-7"	A706 Gr. 60	
6d3	6	2	8'-6"	A706 Gr. 60	



**Midwest Roadside
Safety Facility**

**NCHRP 22-14(2)
Temporary Barrier
with Quad-cab Pickup
Bill of Bars**

Sheet: **4 of 5**
Date: **10/17/2005**

ENR: **GEP**
Invt: **KAP**

Drawing Name: **2214TB-2 R2.dwg**

Scale: **1=16**

Proj: **KAP**

Figure A-4. Temporary Barrier Bill of Bars (English)

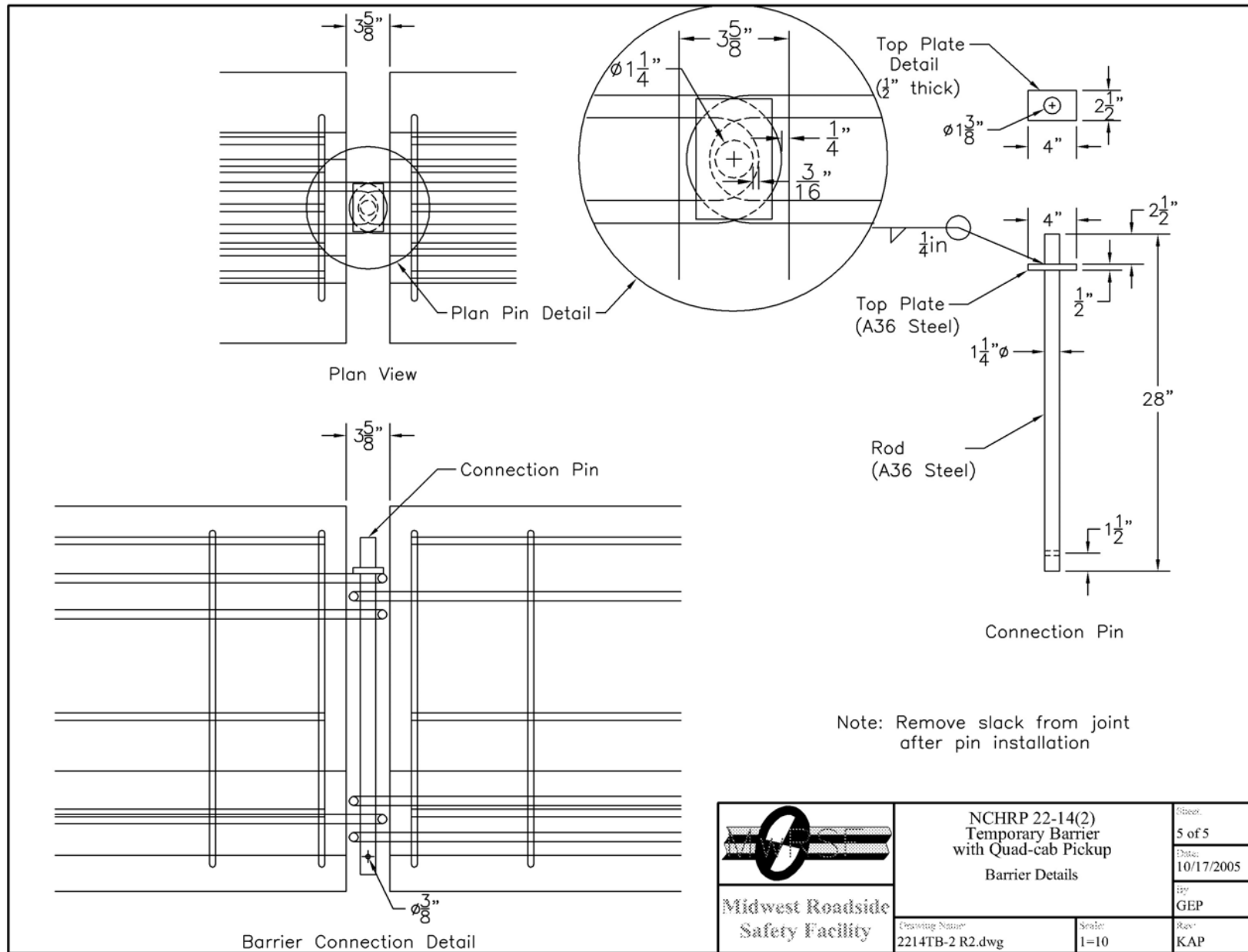
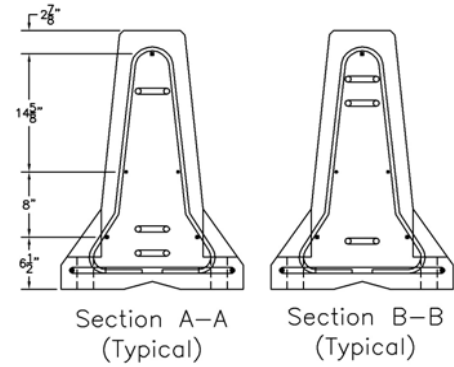
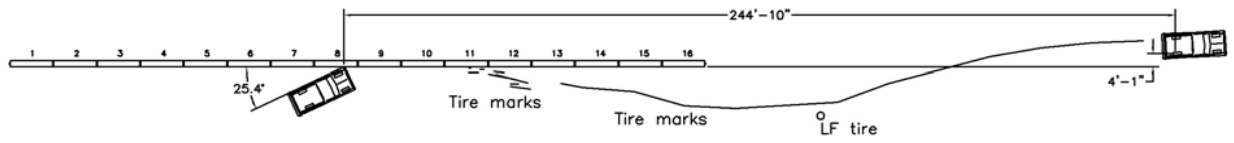


Figure A-5. Temporary Barrier Connection Details (English)



0.000 sec 0.122 sec 0.216 sec 0.400 sec 0.498 sec



58

- Test Agency MwRSF
- Test Number 2214TB-2
- Date 10/12/04
- NCHRP 350 Update Test Designation .. 3-11
- Appurtenance Free-Standing Temporary Barrier
- Total Length 204 ft - 6 in.
- Key Elements - Barrier
 - Description F-Shape Barrier
 - Length 12 ft - 6 in.
 - Base Width 22.5 in.
 - Height 32 in.
- Type of Soil NA
- Test Vehicle
 - Type/Designation 2270P
 - Make and Model 2002 Dodge Ram 1500 Quad Cab Pickup
 - Curb 5,035 lbs
 - Test Inertial 5,000 lbs
 - Gross Static 5,000 lbs
- Impact Conditions
 - Speed 61.9 mph
 - Angle 25.4 degrees
 - Impact Location 3 ft - 11.3125 in. upstream barriers 8 & 9 joint
- Exit Conditions
 - Speed 44.9 mph
 - Angle 7.9 degrees
 - Exit Box Criterion Pass

- Post-Impact Trajectory
 - Vehicle Stability Satisfactory
 - Stopping Distance 244 ft - 10 in. downstream
4 ft - 0.5 in. laterally behind
- Occupant Impact Velocity (350 Update)
 - Longitudinal 17.00 ft/s < 39.4 ft/s
 - Lateral 17.28 ft/s < 39.4 ft/s
- Occupant Ridedown Deceleration (350 Update)
 - Longitudinal 7.17 Gs < 20 Gs
 - Lateral 11.37 Gs < 20 Gs
- THIV (not required) 22.60 ft/s
- PHD (not required) 11.52 Gs
- Test Article Damage Moderate
- Test Article Deflections
 - Permanent Set 73 in.
 - Dynamic 79.65 in.
 - Working Width 102.2 in.
- Vehicle Damage Moderate
 - VDS⁵ 11-LFQ-3
 - CDC⁶ 11-LYES4
 - Maximum Deformation 4.25 in. at front floorpan

Figure B-1. Summary of Test Results and Sequential Photographs (English), Test 2214TB-2